



SPOOLS - PRODUCT CATALOGUE

Unraveling Excellence in Spool Manufacturing.

OUR STORY

Crafting Excellence in Plastics Since the 1990s

START

BEGINNING

In the bustling streets of India, amid the vibrant tapestry of businesses and industries, our story began in the 1990s. It all started with the trading of plastic waste under the name of HARE KRISHNA PLASTICS. Back then, the plastic industry was still finding its footing, and we were just taking our first steps. As time passed, trust was built, and goodwill was earned. It was in 2002 when we decided to cement our presence in the market by establishing HANUMANT POLYMERS PVT. LTD., a manufacturing unit specializing in Plastic Granules.



INTRODUCING THE PROBLEM



Yet, as the years went by, a challenge loomed on the horizon. The business landscape was evolving, and it was time for a change. **This pivotal moment called for a visionary to step in. Enter Mr. Sourabh Thareja, the dynamic force behind our transformation.** He was determined to do something different, something unique that would set us apart. The challenge was clear: to pivot from plastic recycling to the creation of a distinct product manufacturing unit.

ROSE TO THE CHALLENGE

The year 2009 marked the birth of HANUMANT AUTOMOTIVE COMPONENTS, our manufacturing unit dedicated to serving the two-wheeler spares market. **Mr. Thareja's** vision and relentless dedication were the driving forces behind this venture. Along the way, we encountered obstacles and hurdles, but we met each one head-on. Then, in 2012, a new branch emerged under the umbrella of our company, HANUMANT SPOOLS COMPANY, further diversifying our portfolio.



ARRIVING AT A SOLUTION

Since the inception of HANUMANT GROUP, our journey has been one of continuous growth and evolution. We have become synonymous with reliability in the spool manufacturing industry in India. At HANUMANT POLYMERS PVT. LTD., our focus is unwavering, aimed at producing top-quality plastic spools at competitive prices. Today, we proudly stand as a trusted brand, serving prominent business houses across India.



Our plastic spools have garnered acclaim and recognition in the market. Our commitment to quality is unwavering, maintained through stringent quality control measures at every stage of the manufacturing process. In 2000, we further expanded our horizons by venturing into the production of high-quality body spare parts for two-wheelers. With over 700 products in our portfolio, we've strengthened our presence in the scooter segment, offering our clients a comprehensive range of products under the reliable umbrella of Hanumant.

ENVISIONING WHAT'S NEXT



At Team Hanumant, our journey is far from over. We remain committed to being the most trusted vendor and end product manufacturer in India. Our mission is clear: to provide manufacturers and end product users with a steadfast partner they can always rely on. As we look ahead, we envision a future where Hanumant continues to be a beacon of excellence in the Indian Wire & Cable industry, a name synonymous with quality, reliability, and innovation.

Join us on this journey, as together, we redefine the standards of excellence in plastics, spools, and automotive components. At Hanumant, the future is filled with promise, and our commitment to quality and customer satisfaction remains steadfast.

GOAL

INDEX

01

PLASTIC SPOOLS

LAYER WINDING

FOR WELDING WIRE (CO₂) (as per DIN - 8559 Standard)

09

PLASTIC SPOOLS

RANDOM WINDING

FOR WELDING WIRE (CO₂) (as per DIN - 8559 Standard)

11

PLASTIC SPOOLS

LAYER WINDING

FOR S.S WIRE (as per DIN - 46399 Standard)

13

PLASTIC SPOOLS

LAYER WINDING

FOR S.S (FINE WIRE) (as per DIN - 46399 Standard)

18

PLASTIC SPOOLS

LAYER WINDING

FOR FLUX CORE & ALUMINIUM WIRE (as per IECISOS544 Standard)

22

PLASTIC SPOOLS

LAYER WINDING

FOR EDM & BRASS WIRE (as per IECISO544 Standard)

24

PLASTIC SPOOLS

LAYER WINDING

FOR COPPER WIRE (as per - IEC60264-3 and Other Standard)

25

PLASTIC SPOOLS

LAYER WINDING

FOR COPPER FINE WIRE (as per - IEC60264-3 and Other Standard)

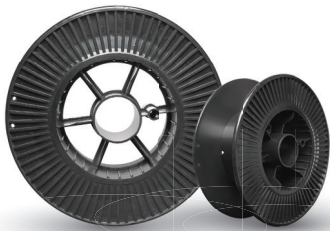
PLASTIC SPOOLS

LAYER WINDING

FOR WELDING WIRE (CO₂) (as per DIN - 8559 Standard)

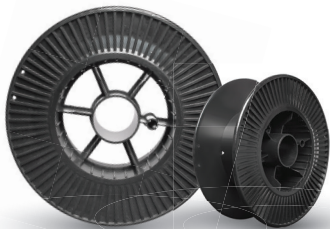
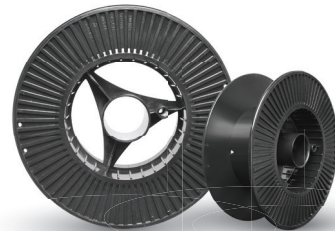
Hanumant[®]
THINK DIFFERENT

S. No : 1.
Product Name: : **SD 270 A**
Material : **Non Prime ABS**
Weight (gm) : **605**



S. No : 2.
Product Name: : **SD 270 A+**
Material : **Non Prime ABS**
Weight (gm) : **650**

S. No : 3.
Product Name: : **SD 270 B**
Material : **Non Prime ABS**
Weight (gm) : **620**

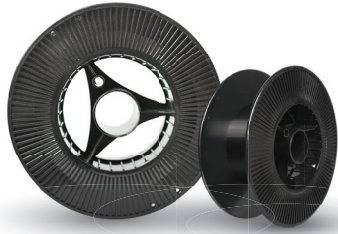
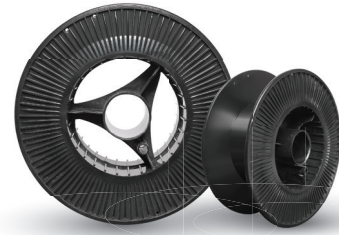


S. No : 4.
Product Name: : **SD 270 B+**
Material : **Non Prime ABS**
Weight (gm) : **650**

S. No : 5.
Product Name: : **SD 270 C**
Material : **Non Prime ABS**
Weight (gm) : **630**

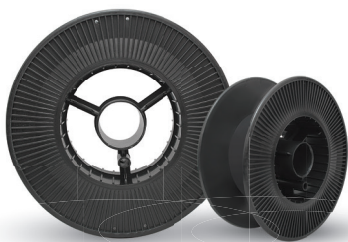
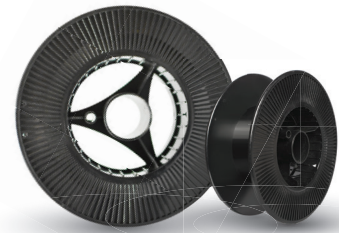


S. No : **6.**
Product Name: : **SD 270 D**
Material : **Non Prime ABS**
Weight (gm) : **600**



S. No : **7.**
Product Name: : **SD 270 E**
Material : **Non Prime ABS**
Weight (gm) : **600**

S. No : **8.**
Product Name: : **SD 270 E+**
Material : **Non Prime ABS**
Weight (gm) : **650**

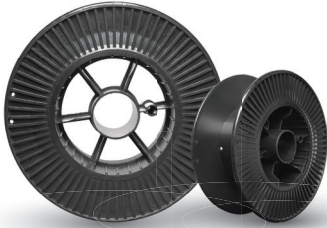
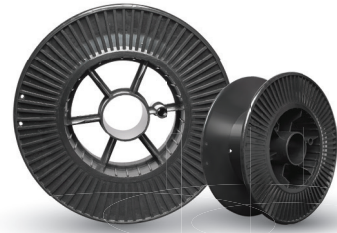


S. No : **9.**
Product Name: : **SD 270 E2**
Material : **Non Prime ABS**
Weight (gm) : **605**

S. No : **10.**
Product Name: : **SD 270 E3**
Material : **Non Prime ABS**
Weight (gm) : **610**

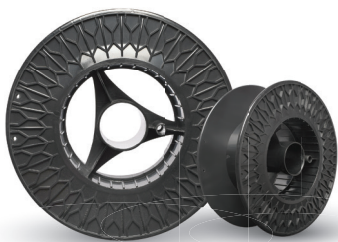


S. No : **11.**
Product Name: : **SD 270 F**
Material : **Non Prime ABS**
Weight (gm) : **600**



S. No : **12.**
Product Name: : **SD 270 F+**
Material : **Non Prime ABS**
Weight (gm) : **630**

S. No : **13.**
Product Name: : **SD 270 J**
Material : **Non Prime ABS**
Weight (gm) : **635**

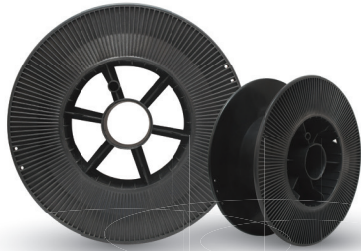
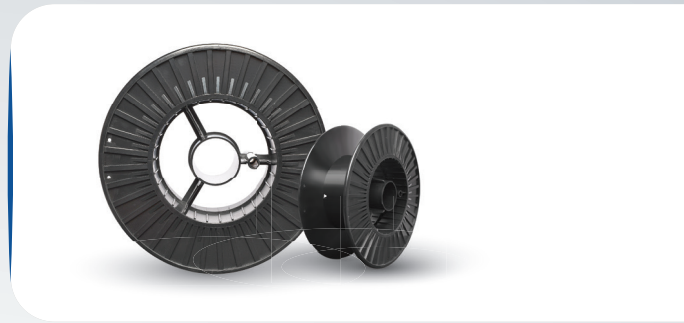


S. No : **14.**
Product Name: : **SD 270 K**
Material : **Non Prime ABS**
Weight (gm) : **600**

S. No : **15.**
Product Name: : **SD 270 R**
Material : **Non Prime ABS**
Weight (gm) : **660**



S. No : **12.**
Product Name: : **SD 270 X**
Material : **Non Prime ABS**
Weight (gm) : **630**



S. No : **13.**
Product Name: : **SD 270 E4**
Material : **Non Prime ABS**
Weight (gm) : **630**

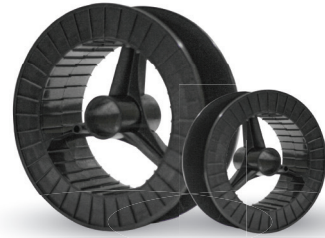
PLASTIC SPOOLS

LAYER WINDING

FOR WELDING WIRE (CO₂) (as per DIN - 8559 Standard)

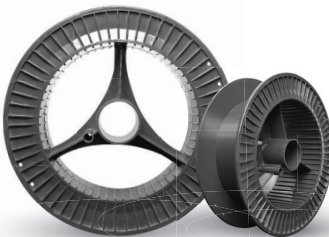
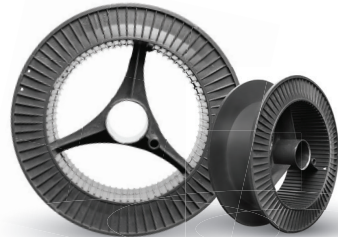
Hanumant[®]
THINK DIFFERENT

S. No : 1.
Product Name: : SD 300
Material : Non Prime ABS
Weight (gm) : 605



S. No : 2.
Product Name: : SD 300 F1
Material : Non Prime ABS
Weight (gm) : 620

S. No : 3.
Product Name: : SD 300 F2
Material : Non Prime ABS
Weight (gm) : 630



S. No : 4.
Product Name: : SD 300 F5
Material : Non Prime ABS
Weight (gm) : 635

S. No : 5.
Product Name: : SD 300 F
Material : Non Prime ABS
Weight (gm) : 650



S. No : **6.**
Product Name: : **SD 300 A**
Material : **Non Prime ABS**
Weight (gm) : **620**



S. No : **7.**
Product Name: : **SD 300 B**
Material : **Non Prime ABS**
Weight (gm) : **605**

S. No : **8.**
Product Name: : **SD 300 C**
Material : **Non Prime ABS**
Weight (gm) : **610**

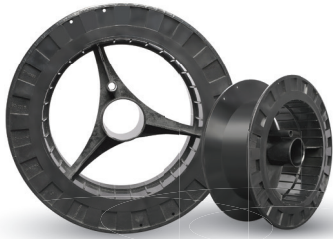
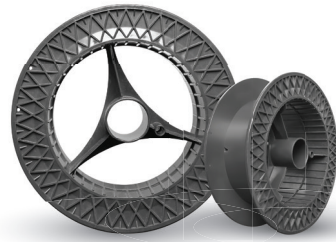


S. No : **9.**
Product Name: : **SD 300 D**
Material : **Non Prime ABS**
Weight (gm) : **635**

S. No : **10.**
Product Name: : **SD 300 H**
Material : **Non Prime ABS**
Weight (gm) : **600**



S. No : **11.**
Product Name: : **SD 300 S**
Material : **Non Prime ABS**
Weight (gm) : **600**



S. No : **12.**
Product Name: : **SD 300 Z**
Material : **Non Prime ABS**
Weight (gm) : **665**

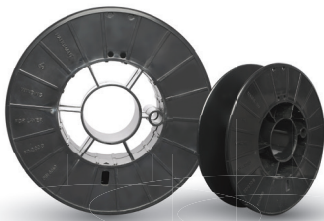
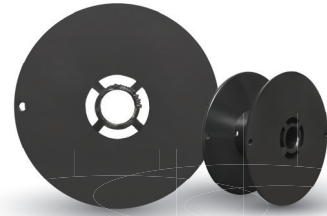
PLASTIC SPOOLS

LAYER WINDING

FOR WELDING WIRE (CO₂) (as per DIN - 8559 Standard)

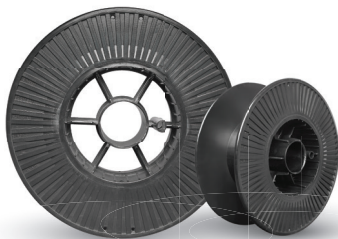
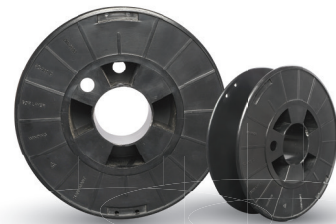
Hanumant[®]
THINK DIFFERENT

S. No : 1.
Product Name: : **SD 100**
Material : **Non Prime ABS**
Weight (gm) : **65**
For Use : **1 KG**



S. No : 2.
Product Name: : **SD 200 B**
Material : **Non Prime ABS**
Weight (gm) : **285**
For Use : **5 KG**

S. No : 3.
Product Name: : **SD 200 D**
Material : **Non Prime ABS**
Weight (gm) : **265**
For Use : **5 KG**



S. No : 4.
Product Name: : **SD 270 EX1**
Material : **Non Prime ABS**
Weight (gm) : **700**
For Use : **20 KG**

S. No : 5.
Product Name: : **SD 270 EX2**
Material : **Non Prime ABS**
Weight (gm) : **750**
For Use : **20 KG**



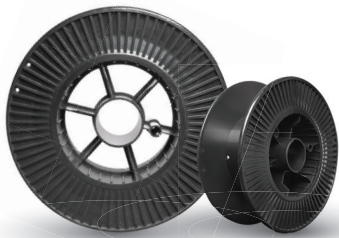
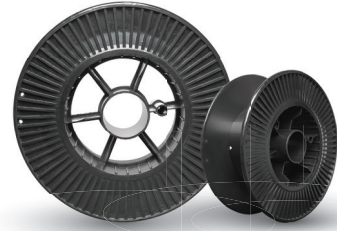
PLASTIC SPOOLS

RANDOM WINDING

FOR WELDING WIRE (CO₂) (as per DIN - 8559 Standard)

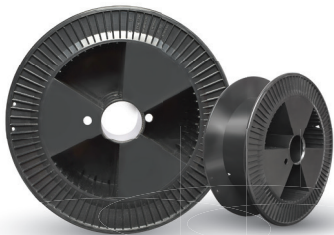
Hanumant[®]
THINK DIFFERENT

S. No : 1.
Product Name: : SD 270
Material : Non Prime PP/CP
Weight (gm) : 725



S. No : 2.
Product Name: : SD 270
Material : Non Prime PP/CP
Weight (gm) : 800

S. No : 3.
Product Name: : SD 300
Material : Non Prime PP/CP
Weight (gm) : 725



S. No : 4.
Product Name: : SD 300
Material : Non Prime PP/CP
Weight (gm) : 800

S. No : 5.
Product Name: : DRUM CAP
Material : Non Prime PP/CP
Weight (gm) : 650



S. No : **6.**
Product Name: : **DRUM CAP**
Material : **Non Prime ABS**
Weight (gm) : **650**



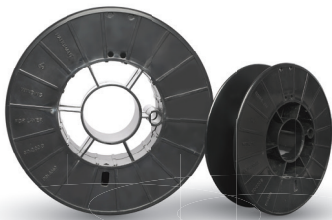
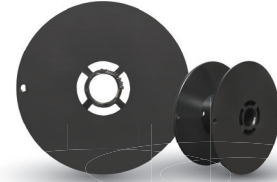
PLASTIC SPOOLS

LAYER WINDING

FOR S.S WIRE (as per DIN - 46399 Standard)

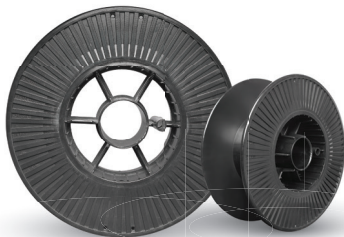
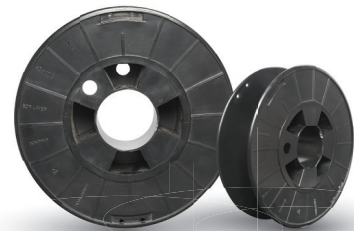
Hanumant[®]
THINK DIFFERENT

S. No : 1.
Product Name: : SD 100
Material : Non Prime ABS
Weight (gm) : 65



S. No : 2.
Product Name: : SD 200 B
Material : Non Prime ABS
Weight (gm) : 285

S. No : 3.
Product Name: : SD 200 D
Material : Non Prime ABS
Weight (gm) : 265

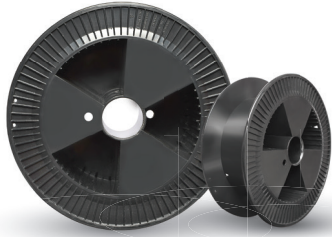
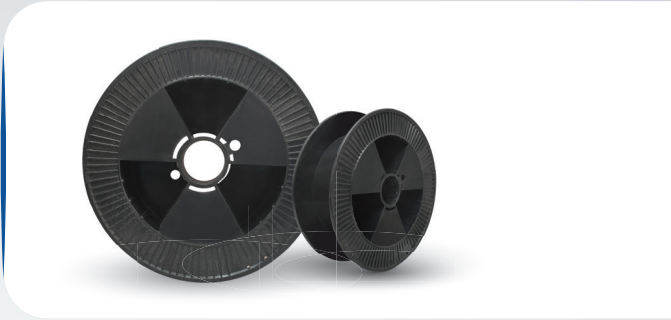


S. No : 4.
Product Name: : SD 270 EX2
Material : Non Prime ABS
Weight (gm) : 750

S. No : 5.
Product Name: : SD 300 G5
Material : Non Prime ABS
Weight (gm) : 770

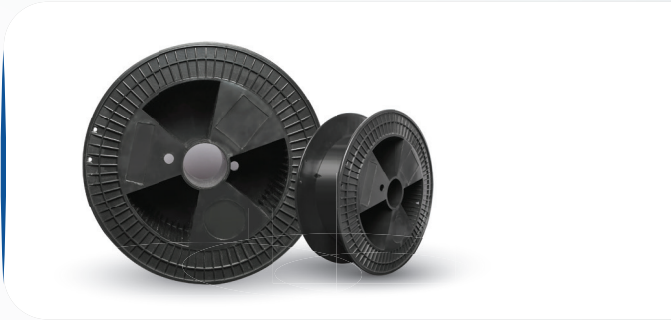


S. No : **6.**
Product Name: : **SD 300 G**
Material : **Non Prime ABS**
Weight (gm) : **820**



S. No : **7.**
Product Name: : **SD 300 G2**
Material : **Non Prime ABS**
Weight (gm) : **800**

S. No : **8.**
Product Name: : **SD 300 G3**
Material : **Non Prime ABS**
Weight (gm) : **850**



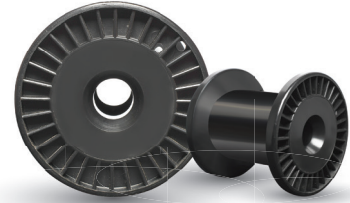
PLASTIC SPOOLS

LAYER WINDING

FOR S.S (FINE WIRE) (as per DIN - 46399 Standard)

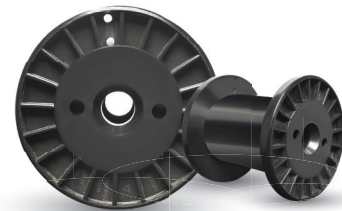
Hanumant[®]
THINK DIFFERENT

S. No : 1.
Product Name: : **DIN 80 R**
Material : **Non Prime ABS**
Weight (gm) : **65**



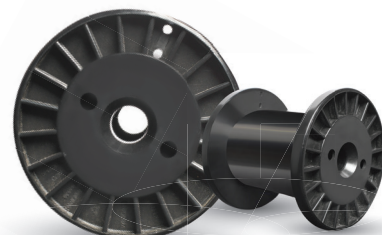
S. No : 2.
Product Name: : **DIN 80 H**
Material : **Non Prime ABS**
Weight (gm) : **70**

S. No : 3.
Product Name: : **DIN 100 R**
Material : **Non Prime ABS**
Weight (gm) : **125**

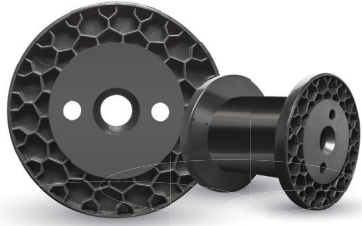


S. No : 4.
Product Name: : **DIN 100 H**
Material : **Non Prime ABS**
Weight (gm) : **120**

S. No : 5.
Product Name: : **DIN 125 R**
Material : **Non Prime ABS**
Weight (gm) : **195**

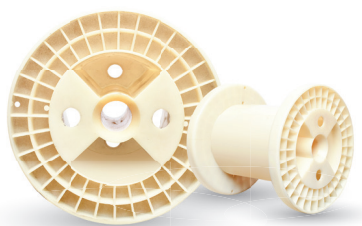


S. No : **6.**
Product Name: : **DIN 125 H**
Material : **Non Prime ABS**
Weight (gm) : **200**



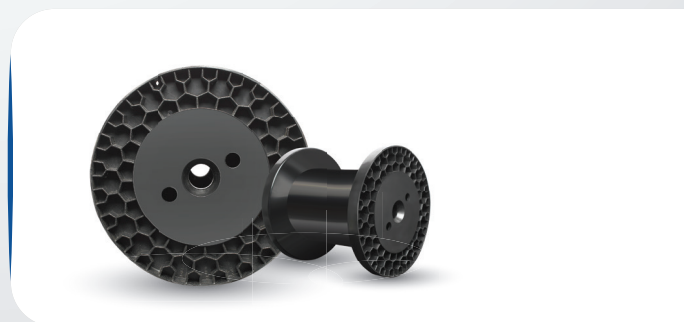
S. No : **7.**
Product Name: : **DIN 160 H (22)**
Material : **Non Prime ABS**
Weight (gm) : **360**

S. No : **8.**
Product Name: : **DIN 160 R (32)**
Material : **Non Prime ABS**
Weight (gm) : **350**

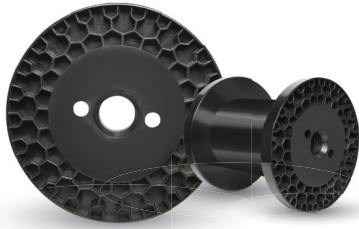
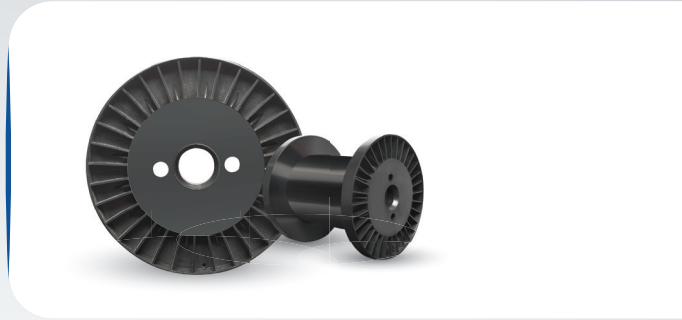


S. No : **9.**
Product Name: : **DIN 160 HW**
Material : **Non Prime ABS**
Weight (gm) : **450**

S. No : **10.**
Product Name: : **DIN 200 H (22)**
Material : **Non Prime ABS**
Weight (gm) : **600**

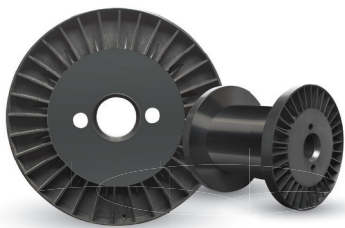
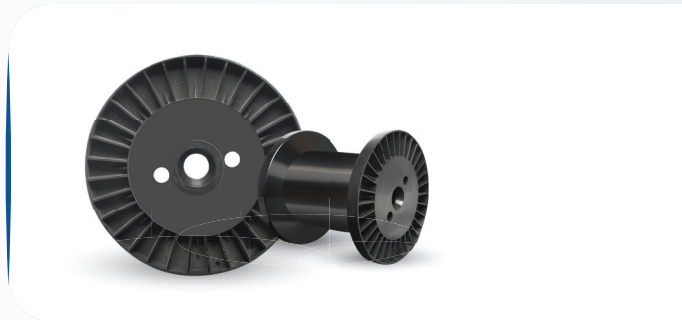


S. No : **11.**
Product Name: : **DIN 200 R (22)**
Material : **Non Prime ABS**
Weight (gm) : **650**



S. No : **12.**
Product Name: : **DIN 200 H (32)**
Material : **Non Prime ABS**
Weight (gm) : **600**

S. No : **13.**
Product Name: : **DIN 200 R (32)**
Material : **Non Prime ABS**
Weight (gm) : **650**

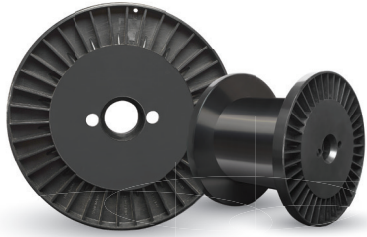
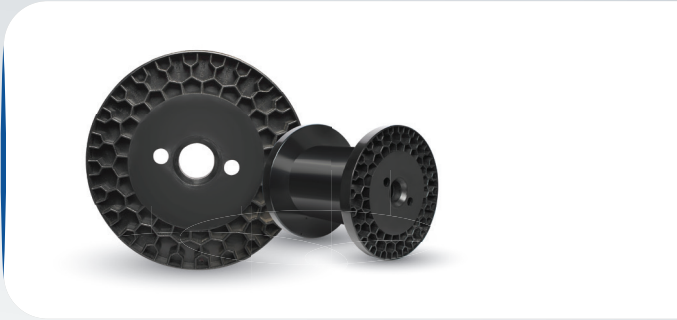


S. No : **14.**
Product Name: : **DIN 200 (36)**
Material : **Non Prime ABS**
Weight (gm) : **600**

S. No : **15.**
Product Name: : **DIN 250 H (22)**
Material : **Non Prime ABS**
Weight (gm) : **1000**



S. No : **16.**
Product Name: : **DIN 250 H (32)**
Material : **Non Prime ABS**
Weight (gm) : **1000**



S. No : **17.**
Product Name: : **DIN 250 R (36)**
Material : **Non Prime ABS**
Weight (gm) : **1050**

S. No : **18.**
Product Name: : **DIN 355**
Material : **Non Prime ABS**
Weight (gm) : **N/A**

UNDER DEVELOPEMENT

UNDER DEVELOPEMENT

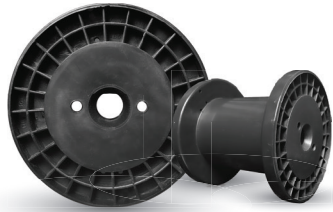
S. No : **19.**
Product Name: : **SH - 390**
Material : **Non Prime ABS**
Weight (gm) : **N/A**

UNDER DEVELOPEMENT

S. No : **20.**
Product Name: : **SH - 460**
Material : **Non Prime ABS**
Weight (gm) : **N/A**

S. No : **21.**
Product Name: : **US 250**
Material : **Non Prime ABS**
Weight (gm) : **N/A**

**UNDER
DEVELOPEMENT**



S. No : **22.**
Product Name: : **DIN 125**
Material : **Non Prime PPCP**
Weight (gm) : **220**

S. No : **23.**
Product Name: : **DIN 200**
Material : **Non Prime PPCP**
Weight (gm) : **650**



**UNDER
DEVELOPEMENT**

S. No : **24.**
Product Name: : **DIN 203**
Material : **Non Prime PPCP**
Weight (gm) : **N/A**

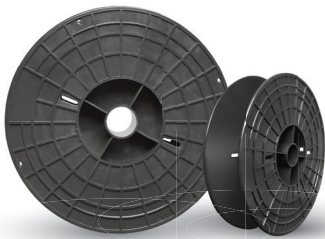
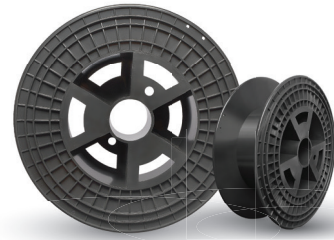
PLASTIC SPOOLS

LAYER WINDING

FOR FLUX CORE & ALUMINIUM WIRE (as per IECISOS544 Standard)

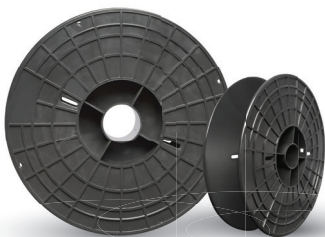
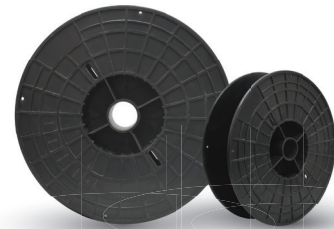
Hanumant[®]
THINK DIFFERENT

S. No : **1.**
Product Name: : **SD 300 W**
Material : **Non Prime ABS**
Weight (gm) : **800**



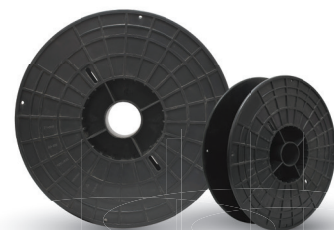
S. No : **2A.**
Product Name: : **SD 305 A (38)**
Material : **Non Prime ABS**
Weight (gm) : **720**

S. No : **2B.**
Product Name: : **SD 305 B (38)**
Material : **Non Prime ABS**
Weight (gm) : **770**

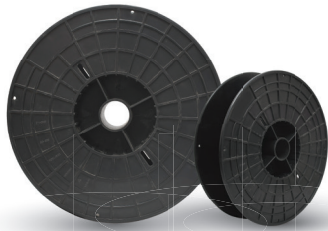


S. No : **3A.**
Product Name: : **SD 305 A (51)**
Material : **Non Prime ABS**
Weight (gm) : **720**

S. No : **3B.**
Product Name: : **SD 305 B (51)**
Material : **Non Prime ABS**
Weight (gm) : **770**

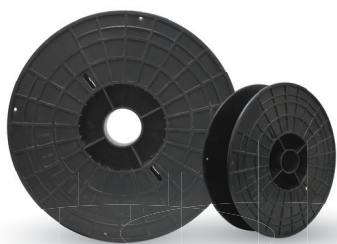
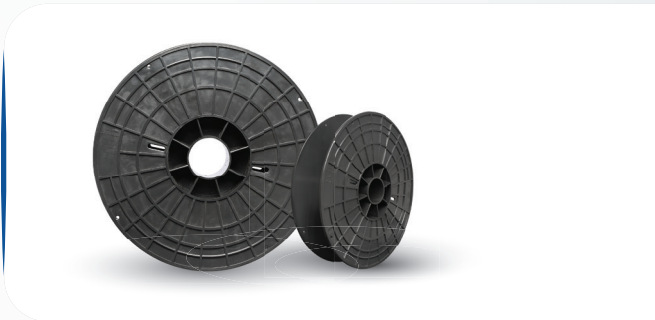


S. No : **4A.**
Product Name: : **SD 320 A (38)**
Material : **Non Prime ABS**
Weight (gm) : **820**



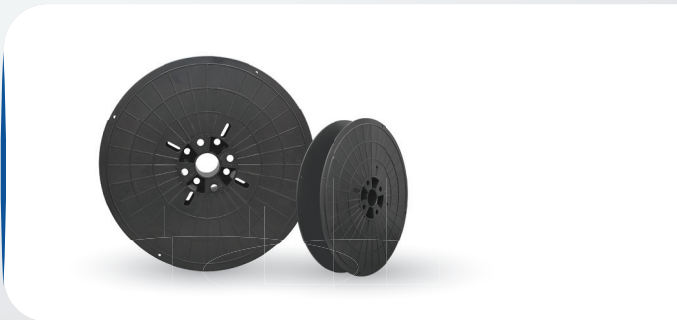
S. No : **4B.**
Product Name: : **SD 320 B (38)**
Material : **Non Prime ABS**
Weight (gm) : **870**

S. No : **5A.**
Product Name: : **SD 320 A (51)**
Material : **Non Prime ABS**
Weight (gm) : **820**

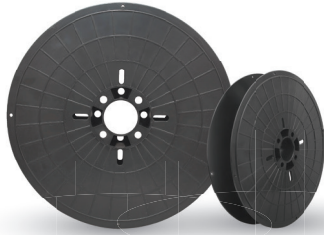
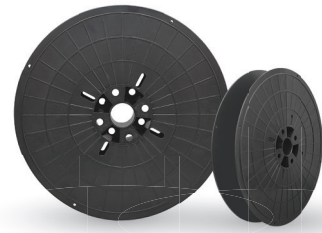


S. No : **5B.**
Product Name: : **SD 320 B (51)**
Material : **Non Prime ABS**
Weight (gm) : **870**

S. No : **6A.**
Product Name: : **SD 360 A (38)**
Material : **Non Prime ABS**
Weight (gm) : **1000**

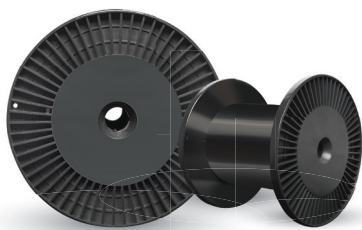
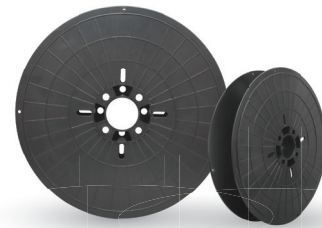


S. No : **6B.**
Product Name: : **SD 360 B (38)**
Material : **Non Prime ABS**
Weight (gm) : **1100**



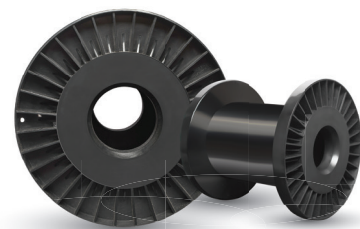
S. No : **7A.**
Product Name: : **SD 360 A (51)**
Material : **Non Prime ABS**
Weight (gm) : **1000**

S. No : **7B.**
Product Name: : **SD 360 B (51)**
Material : **Non Prime ABS**
Weight (gm) : **1100**

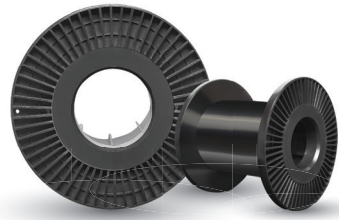


S. No : **8.**
Product Name: : **DIN 200 (22) SPL**
Material : **Non Prime ABS**
Weight (gm) : **600**

S. No : **9.**
Product Name: : **DIN 200 (59) SPL**
Material : **Non Prime ABS**
Weight (gm) : **600**



S. No : **10.**
Product Name: : **DIN 200 (76) SPL**
Material : **Non Prime ABS**
Weight (gm) : **600**



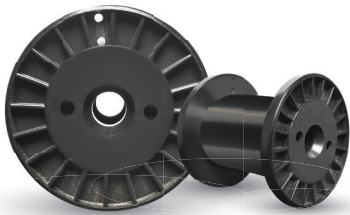
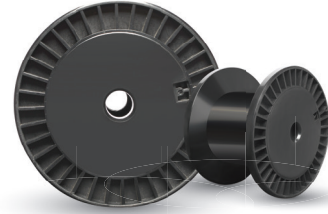
PLASTIC SPOOLS

LAYER WINDING

FOR EDM & BRASS WIRE (as per IECISO544 Standard)

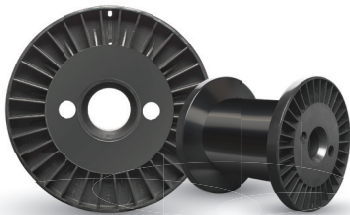
Hanumant[®]
THINK DIFFERENT

S. No : **1.**
Product Name: : **EP-5**
Material : **Non Prime ABS**
Weight (gm) : **320**



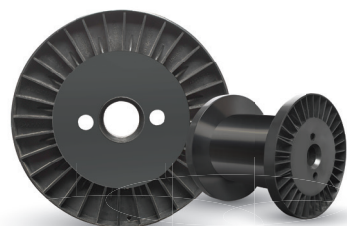
S. No : **2.**
Product Name: : **DIN 100**
Material : **Non Prime ABS**
Weight (gm) : **125**

S. No : **3.**
Product Name: : **DIN 125**
Material : **Non Prime ABS**
Weight (gm) : **200**

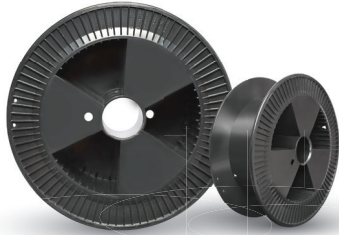
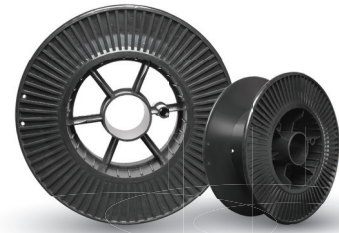


S. No : **4.**
Product Name: : **DIN 160**
Material : **Non Prime ABS**
Weight (gm) : **350**

S. No : **5.**
Product Name: : **DIN 200**
Material : **Non Prime ABS**
Weight (gm) : **600**



S. No : **6.**
Product Name: : **SD 270 B**
Material : **Non Prime ABS**
Weight (gm) : **650**



S. No : **7.**
Product Name: : **SD 300 G2**
Material : **Non Prime ABS**
Weight (gm) : **820**

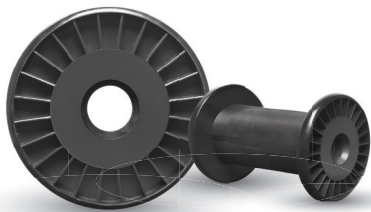
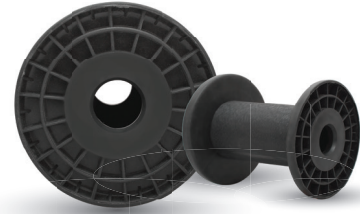
PLASTIC SPOOLS

LAYER WINDING

FOR COPPER WIRE (as per - IEC60264-3 and Other Standard)

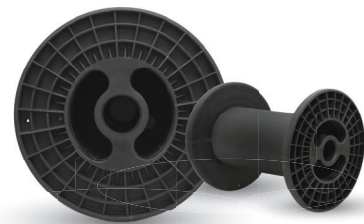
Hanumant[®]
THINK DIFFERENT

S. No : **1.**
Product Name: : **PT 1**
Material : **Non Prime ABS**
Weight (gm) : **105**



S. No : **2.**
Product Name: : **PT 4**
Material : **Non Prime ABS**
Weight (gm) : **280**

S. No : **3.**
Product Name: : **PT 15**
Material : **Non Prime ABS**
Weight (gm) : **520**



**UNDER
DEVELOPEMENT**

S. No : **4.**
Product Name: : **PT 25**
Material : **Non Prime ABS**
Weight (gm) : **N/A**

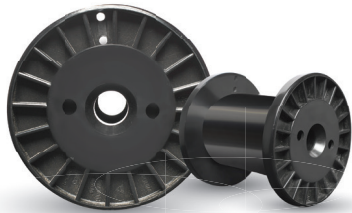
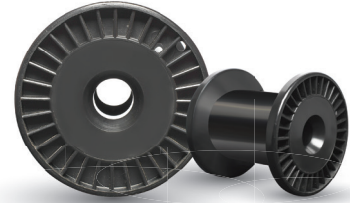
PLASTIC SPOOLS

LAYER WINDING

FOR COPPER FINE WIRE (as per - IEC60264-3 and Other Standard)

Hanumant[®]
THINK DIFFERENT

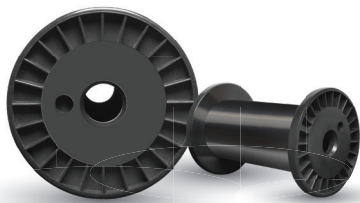
S. No : 1.
Product Name: : **DIN 80**
Material : **Non Prime ABS**
Weight (gm) : **70**



S. No : 2.
Product Name: : **DIN 100**
Material : **Non Prime ABS**
Weight (gm) : **125**

S. No : 3.
Product Name: : **PL - 1**
Material : **Non Prime ABS**
Weight (gm) : **N/A**

**UNDER
DEVELOPEMENT**



S. No : 4.
Product Name: : **PL - 2**
Material : **Non Prime ABS**
Weight (gm) : **150**

S. No : 5.
Product Name: : **PL - 5**
Material : **Non Prime ABS**
Weight (gm) : **N/A**

**UNDER
DEVELOPEMENT**

— OUR CUSTOMERS OF SPOOLS —





Terms & Condition

1. Current Pricelist cancels all our previous Price List.
2. Every order is subjects to our confirmation. We reserve the right to execute the order in full or part in parts.
3. Price are subject to change without any previous notice and supplies shall be the prevailing prices at the time of execution of the order
4. All prices are exclusive of taxes, GST (One National Tax) and other levies, as applicable from time to time shall be charged extra.
5. All prices are our ex-godown, packing, forwarding, postage, etc. shall be charged extra.
6. Order shall be executed on receipt of 25% value of goods as advance.
7. All disputes are subject to Delhi Courts Jurisdiction only.
8. Goods once sold will not taken back.
9. No breakage will be accepted.



Hanumant[®]
P L A S T I C S P O O L S
THE REAL VALUE OF YOUR MONEY

PLASTIC SPOOLS | AUTOMOTIVE COMPONENTS | PLASTIC GRANULES

HANUMANT SPOOLS COMPANY

A Unit of HANUMANT POLYMERS PRIVATE LIMITED

(AN ISO 9001:2015 Certified Co.)

"Quality Delivered"

Khewat No - 135, Khata No - 140, Khilla No - 13//18/1/2, Main Bus Stand Zardakpur Chowk,
Village ZADRAKPUR BHADURGARH, District Jhajjar, Haryana - 124507

Customer Care : +91 - 9350449081, 9911449081, 9717869081

Email : sales@hanumant.co.in | Web : www.hanumantpolymers.com

   / HanumantPolymers